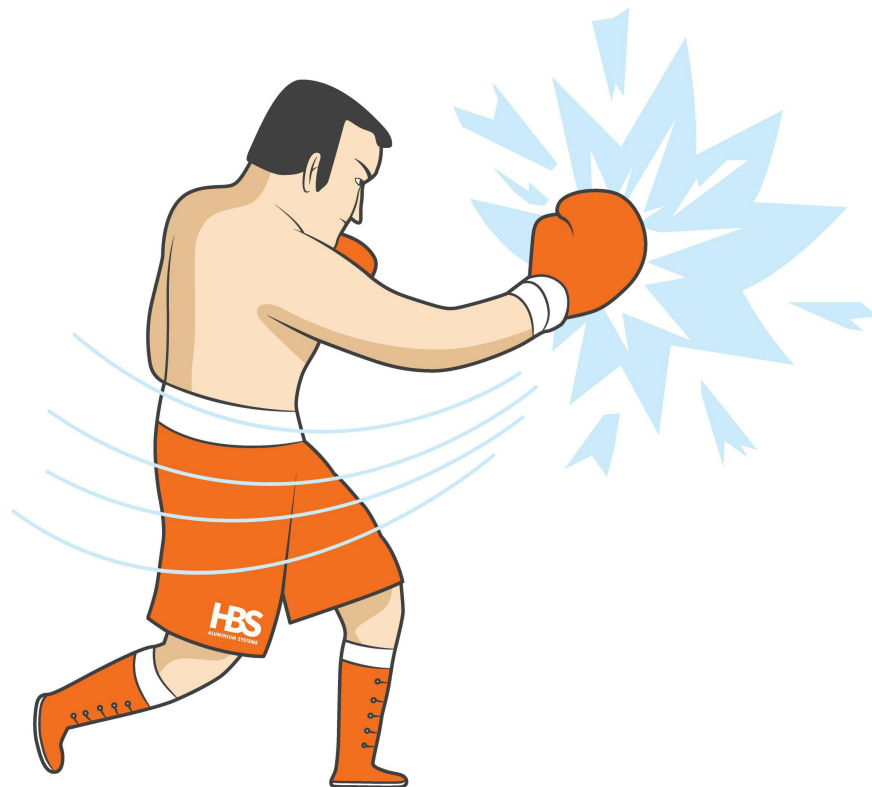


# KNOCKOUT PUNCH 700



Fabricate sliding doors and windows  
in record time with Coastal pneumatic  
punching tools, a lightning fast  
knockout punch.

**HBS**  
ALUMINIUM SYSTEMS



# Coastal 700 Slider

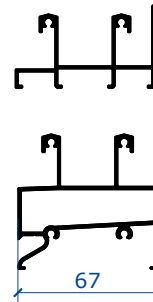
- for the Architect

## VERSATILE SLIDING WINDOW, DOOR & SHUTTER SYSTEM

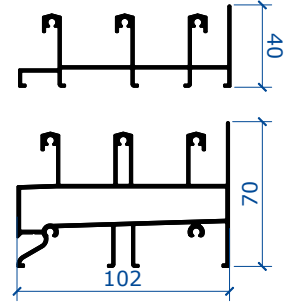
25mm thick panels set on 70 or 105mm framework.

- A1 maximum performance allows for Coastal & in-land application.
- 2 and 3 track Sliding Windows & Doors up to 2400mm high.
- Single glazing - 4 to 6.76mm.
- Flush Lock or Cylinder Keyed Hook Lock.
- Cover caps provide superior quality and finish.

Double tracks



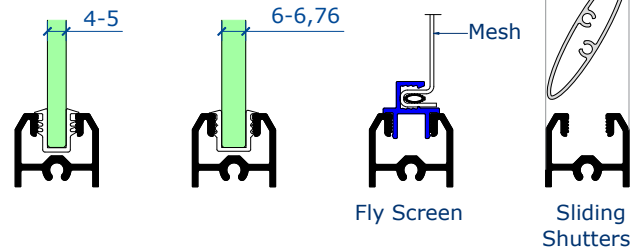
Triple tracks



HBS ALUMINIUM SYSTEMS		Accredited Laboratory Test Certificate		sanas Testing Laboratory T0777	
SANS 613:2011		DATE OF ISSUE : 2019, Oct. 02			
THIS CERTIFICATE RECORDS THE SUCCESSFUL TESTING OF THE TEST SAMPLE INDICATED BELOW IN ACCORDANCE WITH SOUTH AFRICAN FENESTRATION PRODUCT STANDARD SANS 613:2011 excl. par. 5.7					
<b>A1</b>	MANUFACTURER :	HBS ALUMINIUM SYSTEMS	TEST NUMBER:	HBS19/08	
	TEST SAMPLE :	700 SLIDER - XXO	WATER PRESSURE [pa]:	200	
PERFORMANCE CLASS	SYSTEM SUPPLIER :	HBS ALUMINIUM SYSTEMS	DEFLECTION PRESSURE [pa]:	1000	
			STRUCTURAL PRESSURE [pa]:	1500	
			AIR INFILTRATION [l/s/m²]:	0.503	
<b>TEST SAMPLE DETAILS</b>			<b>TEST SAMPLE ELEVATION</b>		
DESCRIPTION:	700 COASTAL SLIDER (Fixed, Vented, Slider, CW, Shop front etc)				
DRAWING NAME:	HBS1907				
NO. PAGES:	7				
<b>PROFILES USED ON TEST SAMPLE (CODE &amp; DESCRIPTION)</b>					
MULLION:	N/A				
TRANSOM:	N/A				
FRAME SILL:	ABAS2004 - TRIPLE SLIDER FRAME SILL				
FRAME TOP:	ABAS2016 - TRIPLE SLIDER FRAME TOP				
FRAME JAMB:	ABA2033 - TRIPLE FRAME JAMB				
PANEL RAILS:	ABAS2000 - PANEL TOP/BOTTOM RAIL				
LOCK STILES:	ABAS2017 - LOCK STILES				

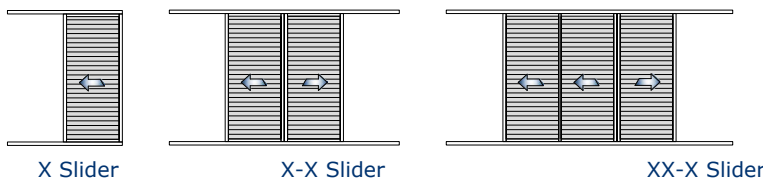
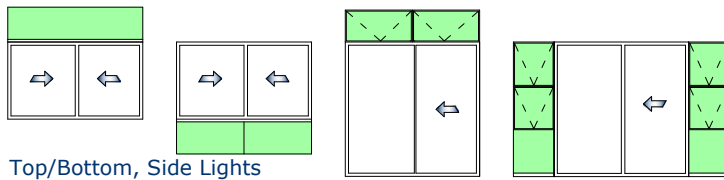
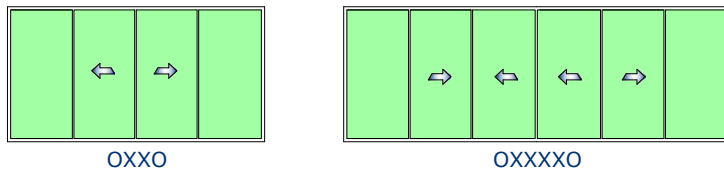
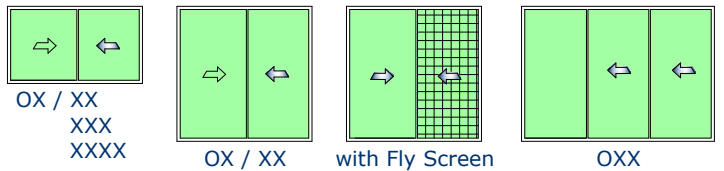
## GLAZING & SHUTTERS

- 4-6.76mm single glazing.
- Fly screens with Fly screen Bar.
- Sliding shutters w. 40/80mm blades.



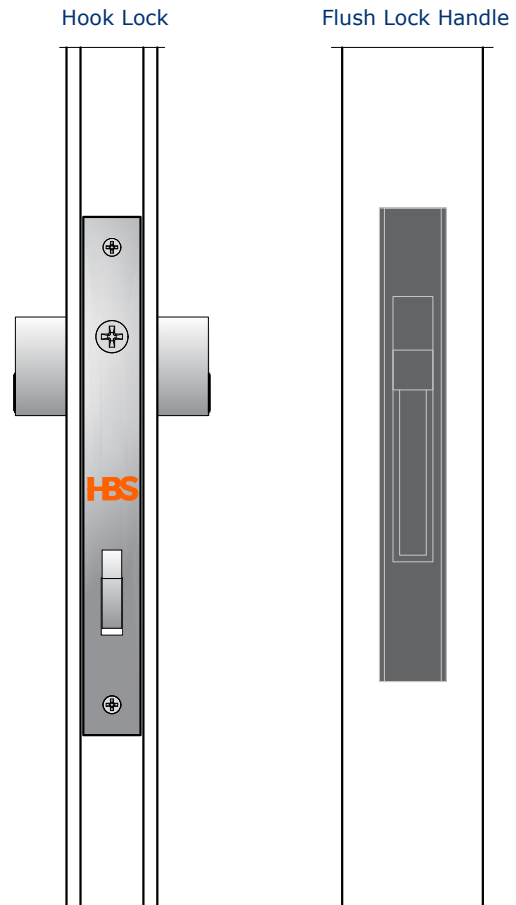
## PRODUCT TYPES

- 2,3,4,6 Panels on 2 or 3 tracks.
- Shutters or Fly screens can be incorporated as required.



Sliding Shutters (XX, XXX, XX-XX, XXX-XXX Sliders)

## LOCK OPTIONS





# Coastal 700 Slider

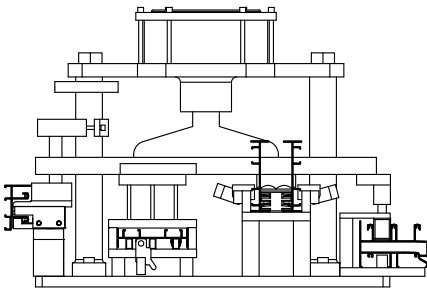
- for the Fabricator

## BENEFITS OF COASTAL 700

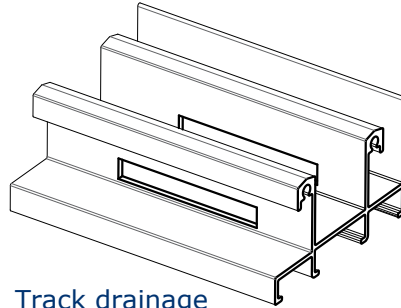
- Pneumatic Punching.
- All square-cut profiles.
- Fast assembly.
- Superior quality & finish.
- Double bearing rollers.
- Quick installation.
- Shutters are correctly punched.



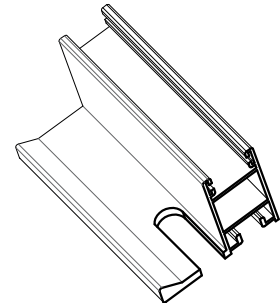
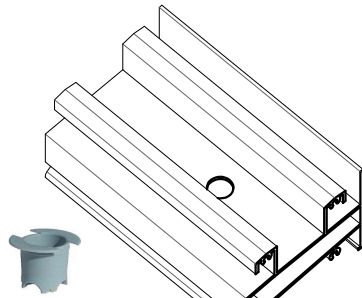
## PRECISION FABRICATION



## ACCURATE RESULTS (incl holes)



- Easy, quick punching.
- Increased productivity.
- Cost-effective.
- Reduces wastage & incorrect machining.

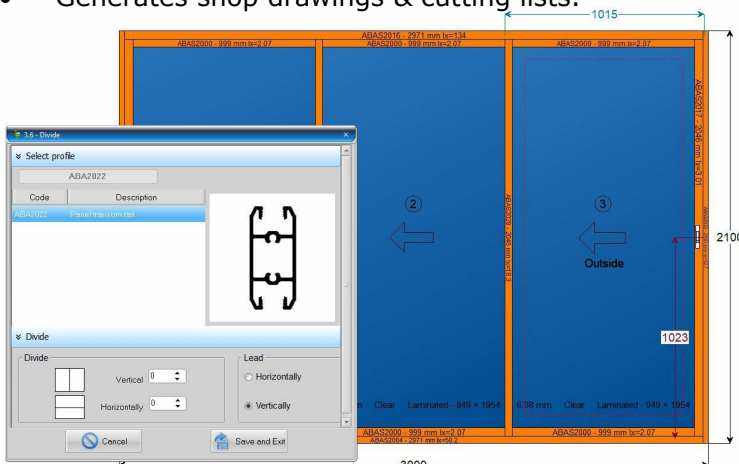


Box Track drainage  
Drain holes for One Way Valves

Lock Stile

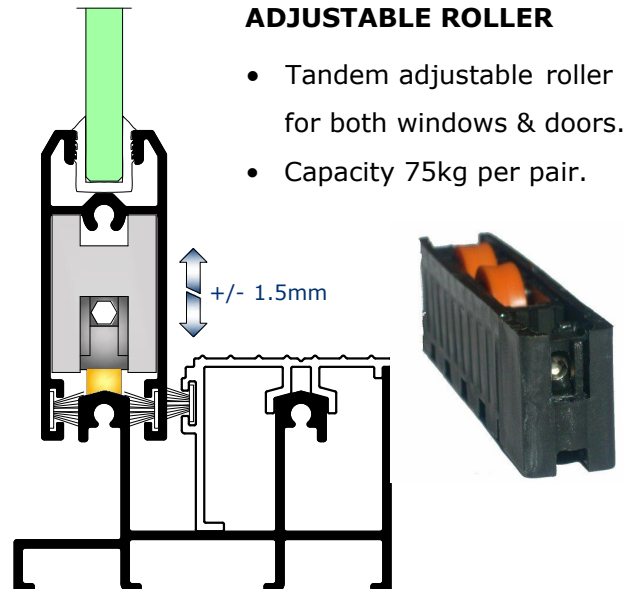
## INTEGRATED IN QUICK QUOTE

- Easy costing & pricing.
- Generates shop drawings & cutting lists.



## ADJUSTABLE ROLLER

- Tandem adjustable roller for both windows & doors.
- Capacity 75kg per pair.



# REASONS WHY ARCHITECTS, FABRICATORS AND HOME OWNERS LOVE COASTAL 700

## 1. TESTED TO THE LIMIT

Compliance to SANS613 A1 performance class allows it to be specified and installed in South Africa and regionally. Every system from HBS is tested to its limits for your peace of mind.

## 2. SIMPLE AND DURABLE PRODUCTS

Our sections allow for effortless and long lasting products, of various sliding window and door types, superior to competing products.

## 3. QUICKER FABRICATION & FLEXIBLE INSTALLATION

Quality assured precision punching, makes machining and fabrication up to 10 times faster, and more cost effective. Easy installation.

## 4. LOCALLY STOCKED & SUPPORTED

All Coastal 700 profiles and hardware are available off the shelf, so no extended lead times. Place the order, choose the colour and you will be fabricating and installing in no time.

