

660 SHOPFRONT



For robust facades, the new 660 Shopfront is the ideal solution. The versatile box profiles create uniform screens & doors for all your commercial needs.

HBS
ALUMINIUM SYSTEMS

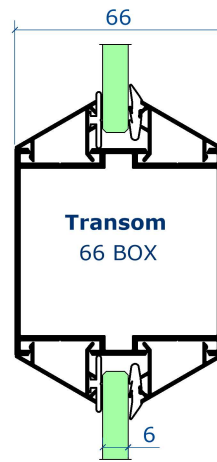


660 Shopfront

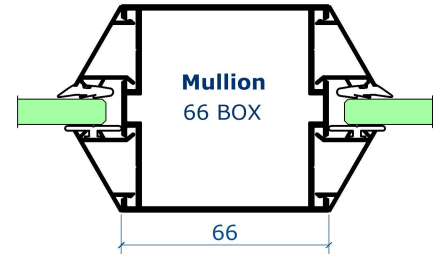
- for the Architect

VERSATILE & ROBUST

- 660 shopfront offers up to SANS613 A2 water structural performance with 6 to 32mm glass.
- Doors are 66mm thick and set on Heavy Duty hinges available in Black or any colour to match.
- Glazing from Inside or Outside as required.
- Internally, up to 2700mm height w. 66 Box profiles
- Externally, up to 3600mm height w. 150mm mullions (1500pa A2)
- Head & Sill compensation available allows for quick installation, building movement and expansion.



Double bead design offers a uniform appearance Inside and Out

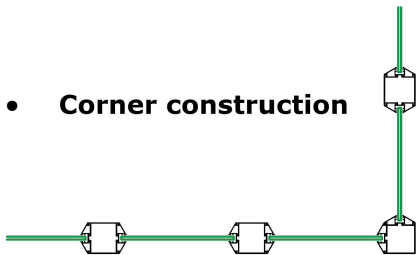


FRAME CONSTRUCTION OPTIONS

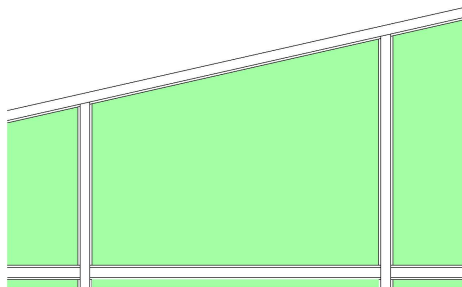
• Flat screens



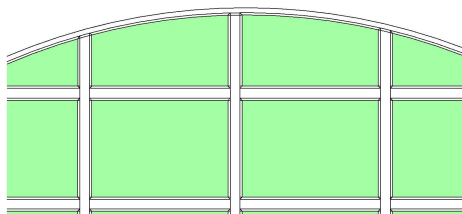
• Corner construction



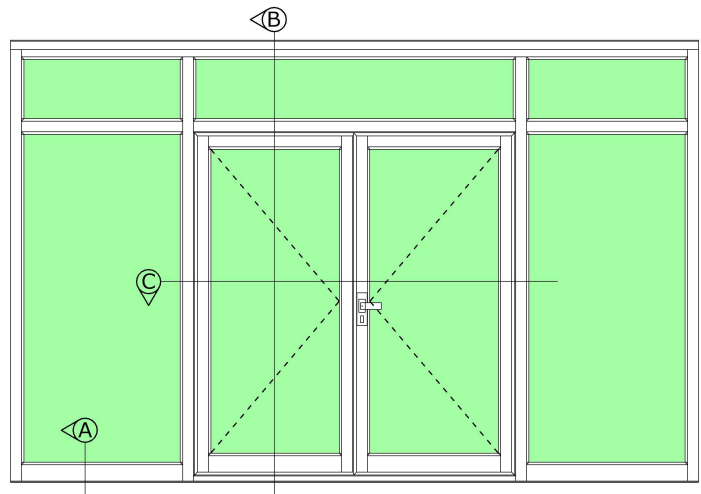
• Sloping frame top



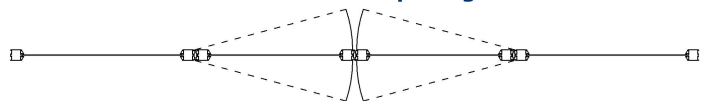
• Arched frame top



TYPICAL SCREEN w. HINGED DOORS

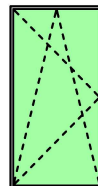


Inside or outside opening doors

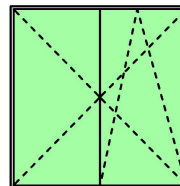


• Door inserts

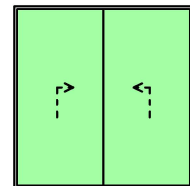
Sliding Doors require 150mm frame depth



NX Turn-Tilt



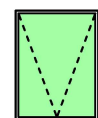
NX Balcony



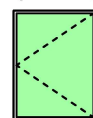
Lift-Slide, Galaxy 700 & 900 Coastal

• Window inserts

Casement, Explorer, Window Wall



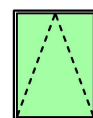
Top Hung



Side Hung



Turn-Tilt



Tilt Only



660 Shopfront

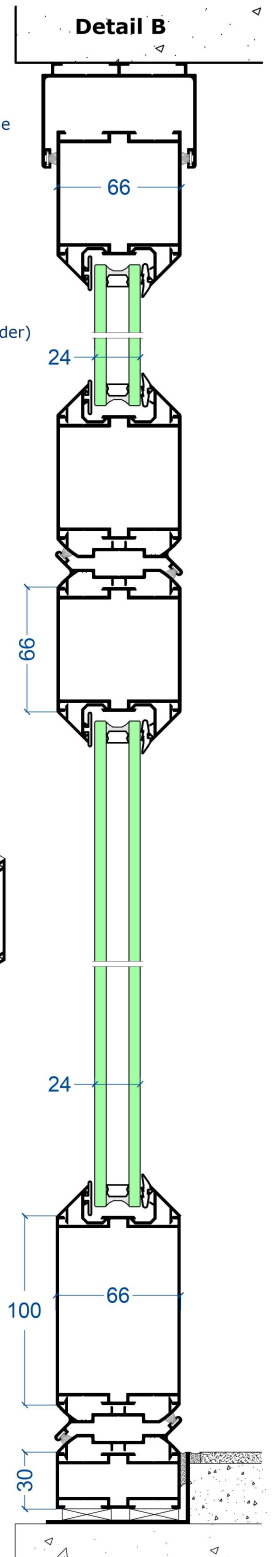
- for the Fabricator

BENEFITS

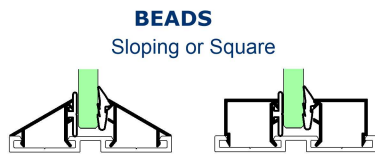
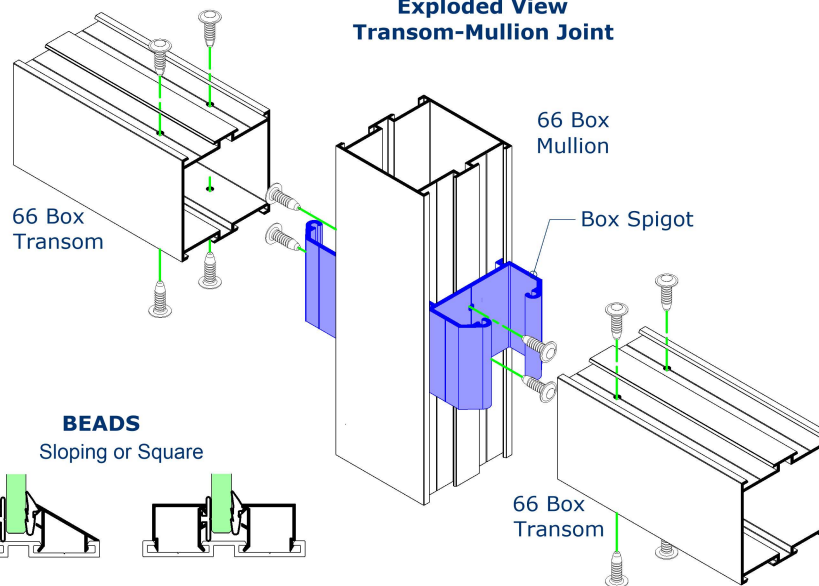
- 66mm box profiles can be used for both frame and door panels.
- Square & symmetric profiles provide easy fabrication.
- Box Spigot fits all Frame and Door profiles. Use simple drill jig.
- Heavy Duty hinge is self-locating for accurate installation.
- Square and Sloping glazing beads provide the appearance required.
- Glazing from inside or outside as site conditions allow.
- Head & Sill compensation allows for fast on-site installation.

HEAD
-for 66mm frame
-for 150mm frame

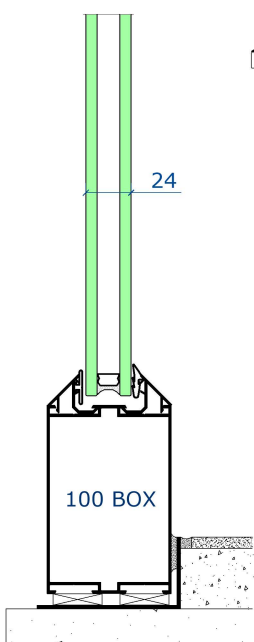
GLAZING
6 - 10mm
24 - 32mm
(up 46 mm on order)



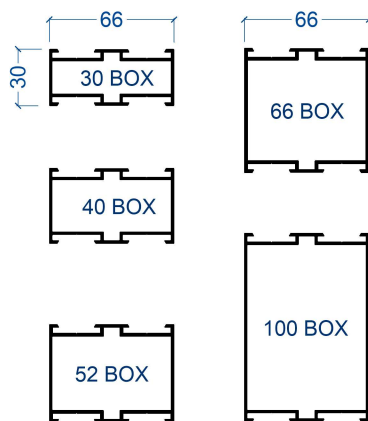
Heavy Duty Hinges



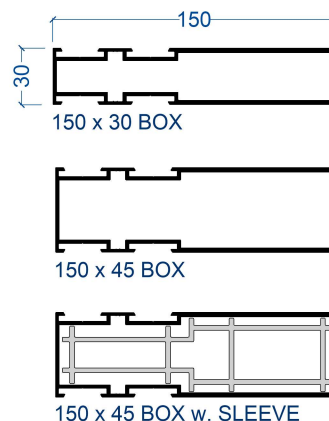
Detail A



66mm PROFILES



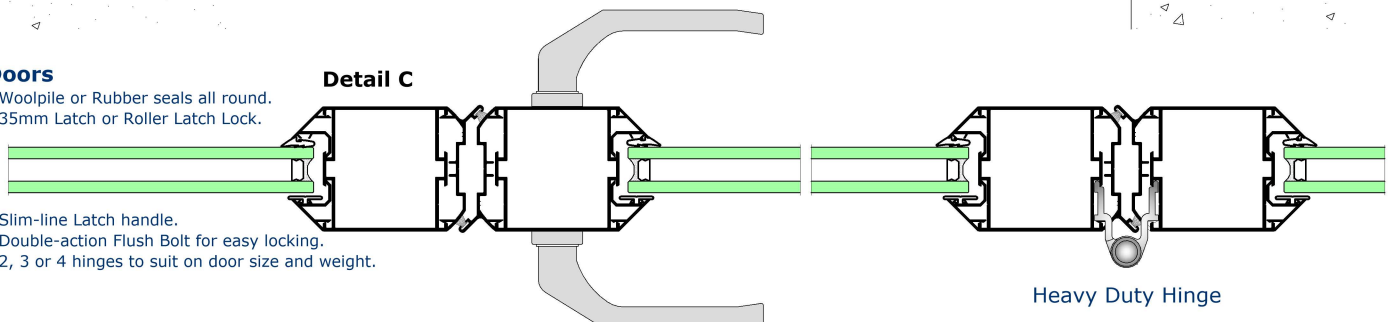
150mm PROFILES



Doors

- Woolpile or Rubber seals all round.
- 35mm Latch or Roller Latch Lock.

Detail C



- Slim-line Latch handle.
- Double-action Flush Bolt for easy locking.
- 2, 3 or 4 hinges to suit on door size and weight.

Heavy Duty Hinge

REASONS WHY ARCHITECTS, FABRICATORS AND COMMERCIAL OPERATORS PREFER 660 SHOPFRONT

1. VERSATILE & ROBUST SHOPFRONT SYSTEM

660 can be found in many Malls and High-rise buildings around the Western Cape & Gauteng. Designed with less components than traditional Shopfront systems the 660 system offers robust, durable and compelling facades for commercial use.

2. SUPERB PERFORMANCE

A2 Water and Structural performance is available with the 660 system. This is a step up from the conventional Clip systems.

HBS offers a high quality product with excellent performance. It is tested to its limits under SANAS accreditation SANS613:2011.

3. SIMPLE FABRICATION

Frame-work profiles are all square-cut and need only simple drilling using a small jig. No machining or notching. Door panels are made using the exact same profiles. Beads are sloping or square and used with a single gasket at a time to keep things simple.

4. LOCALLY STOCKED & SUPPORTED

All 660 Shopfront profiles and hardware are available off the shelf so no extended lead times. Place the order, choose the colour and you will be fabricating and installing in no time.

5. AVAILABLE IN QUICK QUOTE

Custom 660 Shopfronts products can be priced in Quick Quote. Material Orders, Cutting Lists, CAD Shop Drawings and Project Costings can be generated including all hardware required.

